



GAT MONTHLY MEMBERSHIP PROGRESS REPORT

Results as of: 5/31/2024

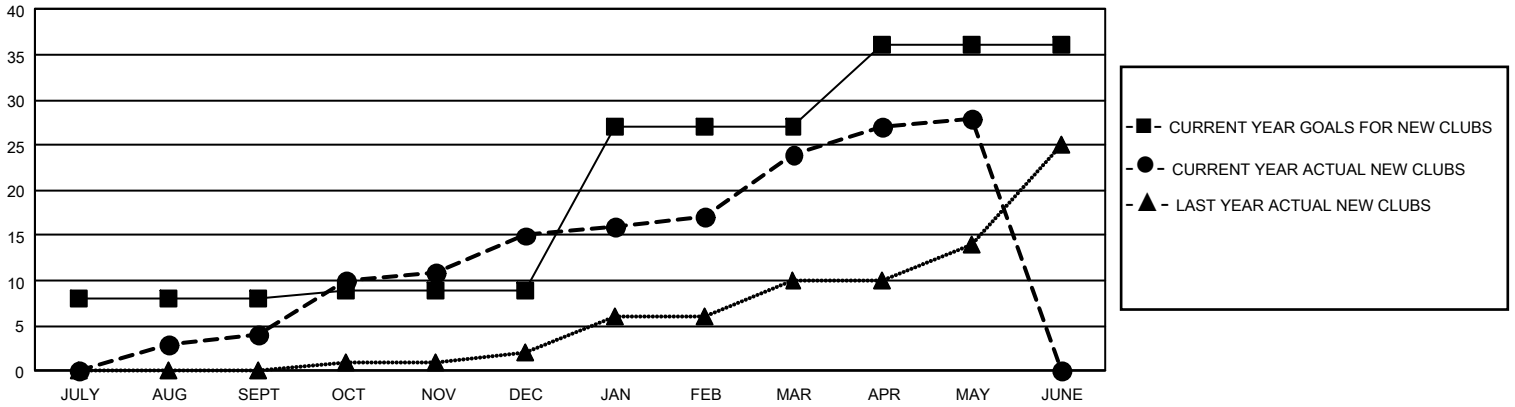
GMT Constitutional Area 8, Group A

REPORT DOES NOT INCLUDE CLUBS IN UNDISTRICTED AREAS.

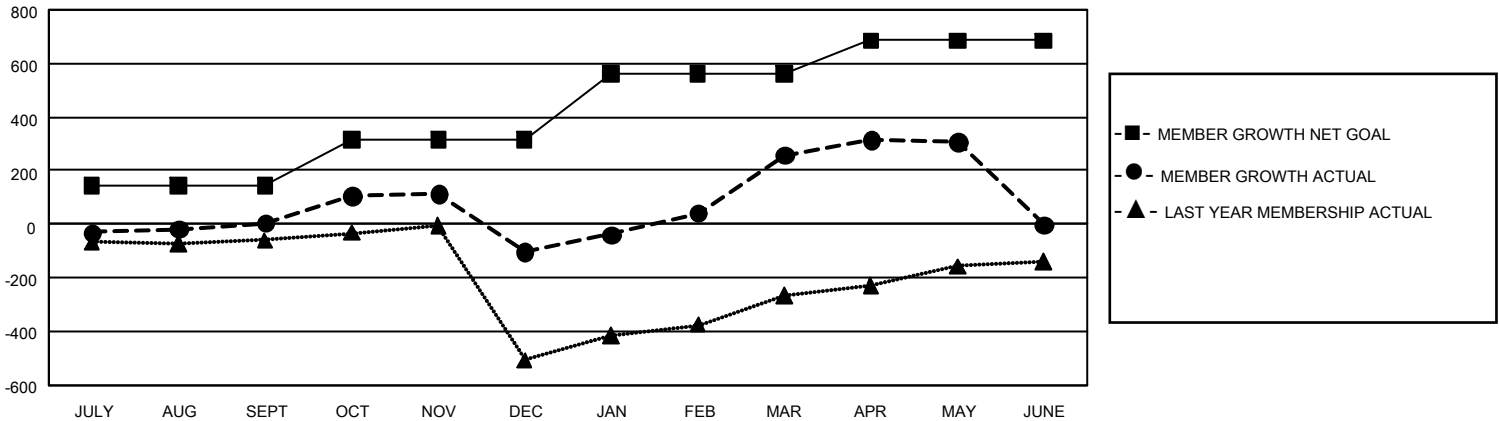
Clubs			
RESULTS FOR 2023-2024			
QUARTER	NEW CLUB GOAL	NEW CLUBS	DROPPED CLUBS
JULY/AUG/SEPT	24	4	3
OCT/NOV/DEC	3	11	8
JAN/FEB/MAR	54	9	0
APR/MAY/JUNE	27	4	0

Members			
RESULTS FOR 2023-2024			
QUARTER	MEMBER GROWTH NET GOAL	MEMBER GROWTH ACTUAL	DROPPED MEMBERS ACTUAL (including transfers)
JULY/AUG/SEPT	145	276	249
OCT/NOV/DEC	170	532	604
JAN/FEB/MAR	245	489	117
APR/MAY/JUNE	126	227	155

GOALS AND ACTUAL NEW CLUBS CUMULATIVE



GOALS AND ACTUAL MEMBERS CUMULATIVE



DROPPED CLUBS: 11	230 CLUBS OF 427 ADDED 1 OR MORE NEW MEMBERS	GENDER DISTRIBUTION	
		MALE 6,725 (70.14%)	FEMALE 2,860 (29.83%)
DROPPED MEMBERS		NON BINARY 0 (0.00%)	PREFER NOT TO ANSWER 3 (0.03%)
DECEASED 30	CLICK HERE FOR CUMULATIVE MEMBERSHIP DATA	TOTAL FAMILY UNIT MEMBERS 199	
CLUB CANCELLED 172		FAMILY MEMBERS PAYING HALF DUES 108	
OTHER 922			
TOTAL 1,124			